

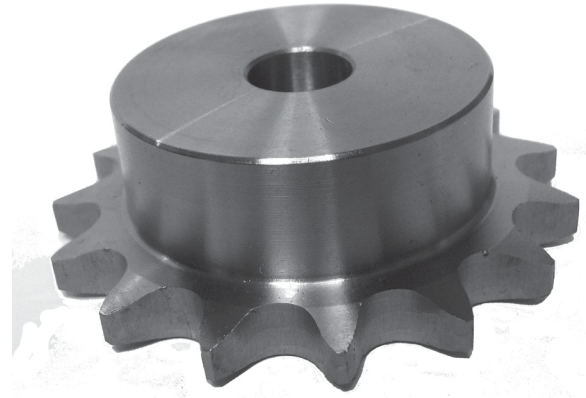
# NO. 40 ROLLER CHAIN SPROCKETS

0.500" Pitch

Hub

Minimum Plain Bore

Steel



Part Number	Type	No. of Teeth	Outside Diameter (in)	Stock Bore (in)	Maximum Bore (in)	Face Width (in)	Overall Length (in)	Hub Diameter (in)
40B38	B	38	6.330"	0.625"	2.250"	0.284"	1.000"	3.250"
40B39	B	39	6.490"	0.625"	2.250"	0.284"	1.000"	3.250"
40B40	B	40	6.650"	0.750"	2.375"	0.284"	1.125"	3.500"
40B41	B	41	6.810"	0.750"	2.375"	0.284"	1.125"	3.500"
40B42	B	42	6.970"	0.750"	2.375"	0.284"	1.125"	3.500"
40B43	B	43	7.130"	0.750"	2.375"	0.284"	1.125"	3.500"
40B44	B	44	7.290"	0.750"	2.375"	0.284"	1.125"	3.500"
40B45	B	45	7.450"	0.750"	2.375"	0.284"	1.125"	3.500"
40B46	B	46	7.610"	0.750"	2.375"	0.284"	1.125"	3.500"
40B47	B	47	7.770"	0.750"	2.375"	0.284"	1.125"	3.500"
40B48	B	48	7.930"	0.750"	2.375"	0.284"	1.125"	3.500"
40B49	B	49	8.090"	0.750"	2.375"	0.284"	1.125"	3.500"
40B50	B	50	8.250"	0.750"	2.375"	0.284"	1.125"	3.500"
40B51	B	51	8.410"	0.750"	2.375"	0.284"	1.125"	3.500"
40B52	B	52	8.570"	0.750"	2.375"	0.284"	1.125"	3.500"
40B53	B	53	8.730"	0.750"	2.375"	0.284"	1.125"	3.500"
40B54	B	54	8.890"	0.750"	2.375"	0.284"	1.125"	3.500"
40B55	B	55	9.040"	0.750"	2.375"	0.284"	1.125"	3.500"
40B56	B	56	9.200"	0.750"	2.375"	0.284"	1.125"	3.500"
40B57	B	57	9.360"	0.750"	2.375"	0.284"	1.125"	3.500"
40B58	B	58	9.520"	0.750"	2.375"	0.284"	1.125"	3.500"
40B59	B	59	9.680"	0.750"	2.375"	0.284"	1.125"	3.500"
40B60	B	60	9.840"	0.750"	2.375"	0.284"	1.125"	3.500"
40B70	B	70	11.430"	0.750"	2.750"	0.284"	1.250"	4.000"
40B72	B	72	11.750"	0.750"	2.750"	0.284"	1.250"	4.000"
40B80	B	80	13.030"	0.750"	2.750"	0.284"	1.250"	4.000"
40B84	B	84	13.660"	0.750"	2.750"	0.284"	1.250"	4.000"
40B96	B	96	15.570"	1.000"	2.750"	0.284"	1.250"	4.000"
40B112	B	112	18.120"	1.000"	2.750"	0.284"	1.250"	4.000"

Roller chain sprocket part numbers can be determined as follows:  
 Chain + (A for Hubless or B for Hub) + Number of Teeth  
 For example: 40B112 = 40 Chain + B for Hub + 112 Teeth